

Welcome to ARTA

Liquid CO2 transfer equipment

Over 40 years in cryogenics

Wide range of applications:

- Truck, railcar, container
- Shore to ship, Ship to ship

All required approvals in place

LPG // LNG // LCO2

Main products:

- Dry break couplings
- Breakaway couplings
- Swivel joints

Cryogenic truck and container applications



Cryogenic bunkering



ARTA is NUMBER 1 in LCO2 couplings

**Truck
ISO-Container
Railcar
Shore-to-Ship
Ship-to-Ship**

**All LCO2 applications
already served**

Over 300

**LCO2 couplings
already delivered**

DN50 to DN150

**All LCO2 coupling sizes
already installed**

ASK-LC Liquid CO2 Dry Breaks

Technical Datasheet

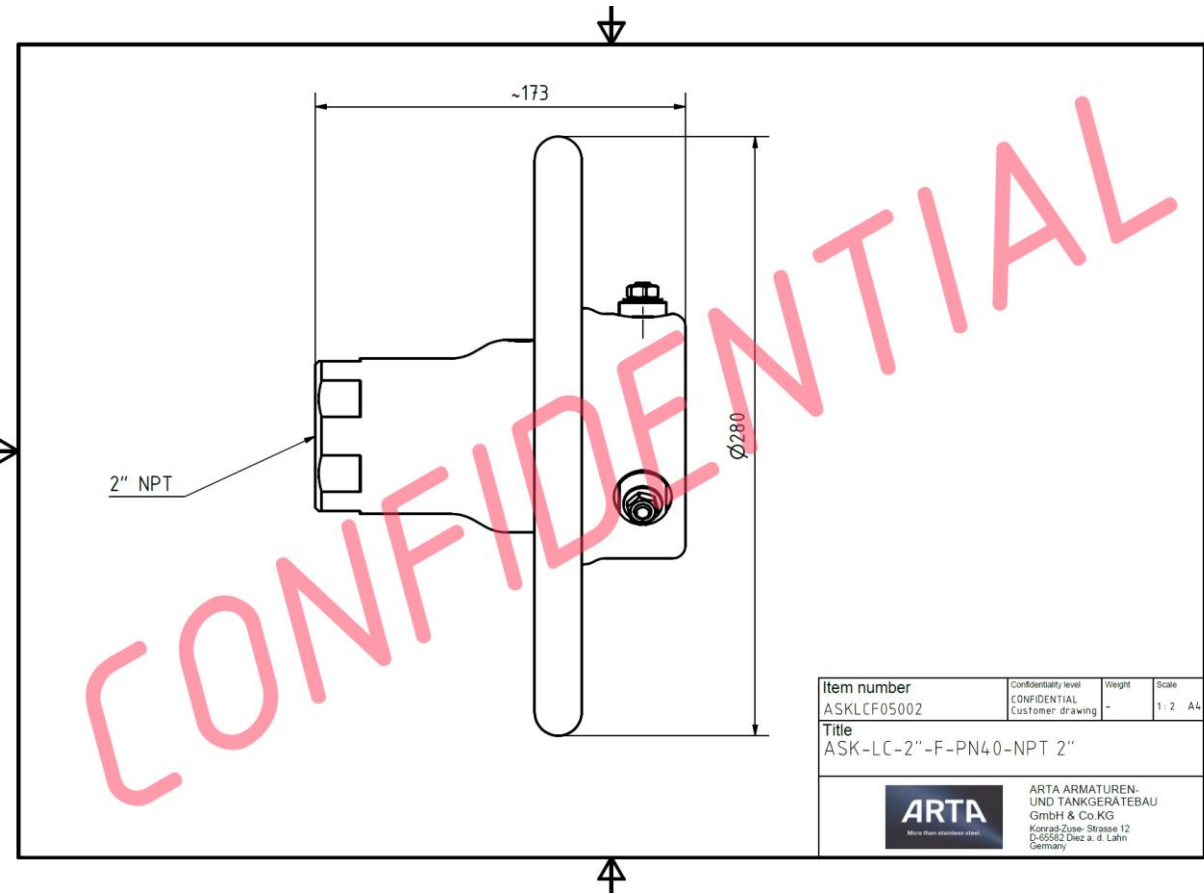
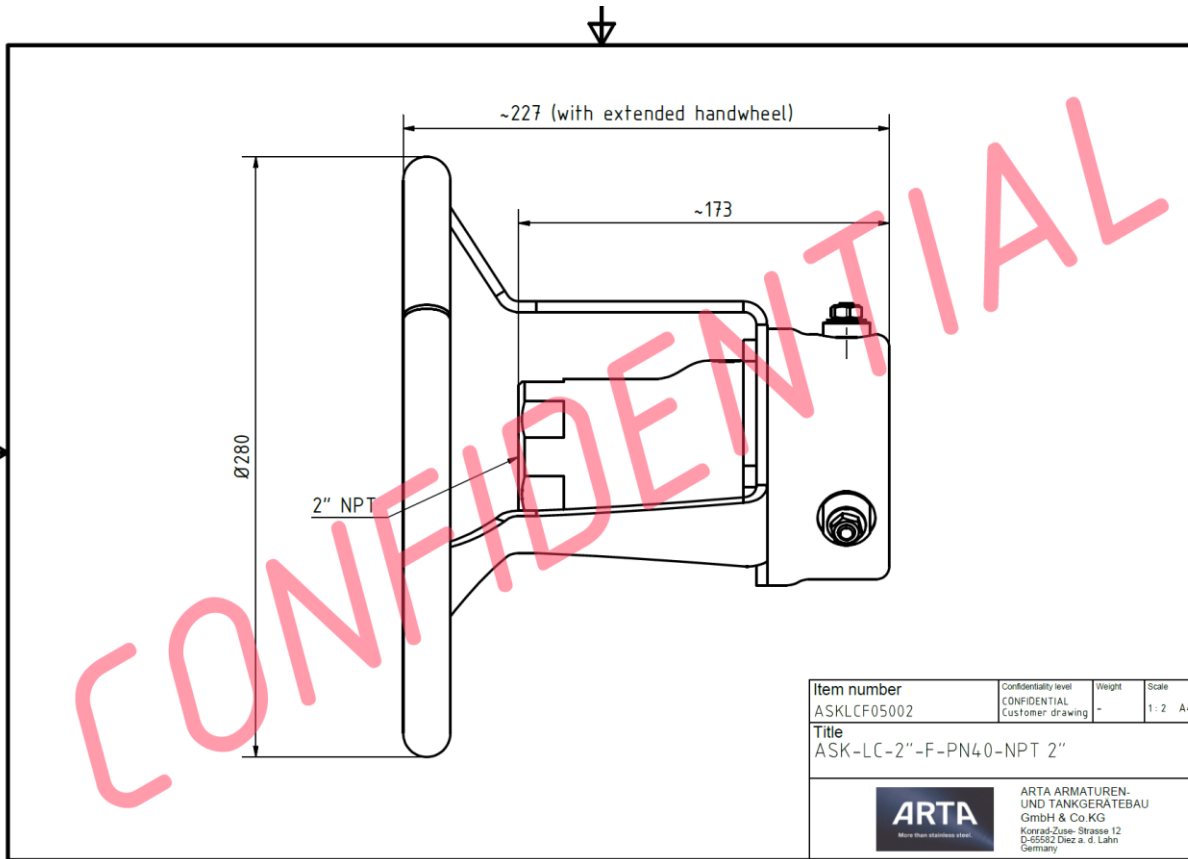
Operating temperature	-100°C to +40°C
Pressure rating	PN40
Sizes	DN50, DN65, DN80, DN100
Body material	316L // 1.4404
Sealing	PTFE Cryo Seal
Approvals	ADR, PED



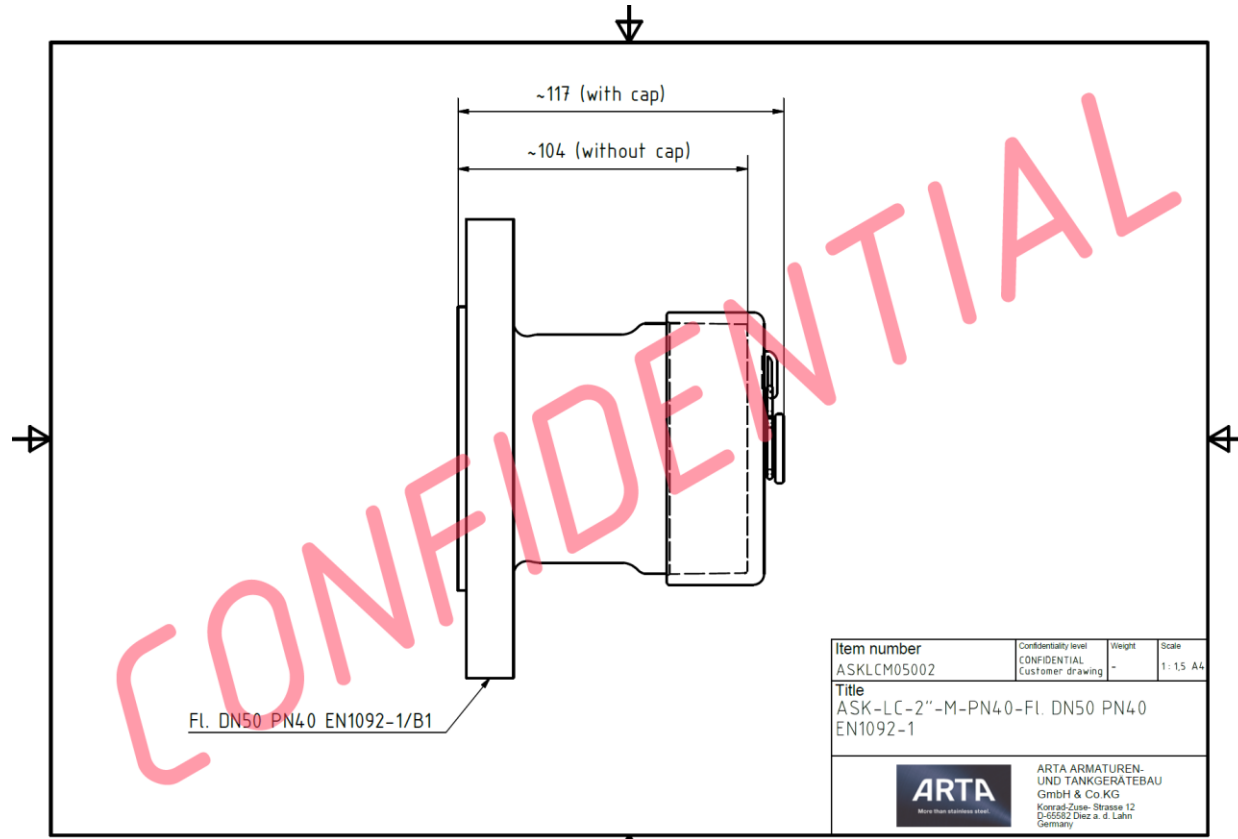
ASK-LC handle styles – fit for purpose



ASK-LC 2" technical drawings

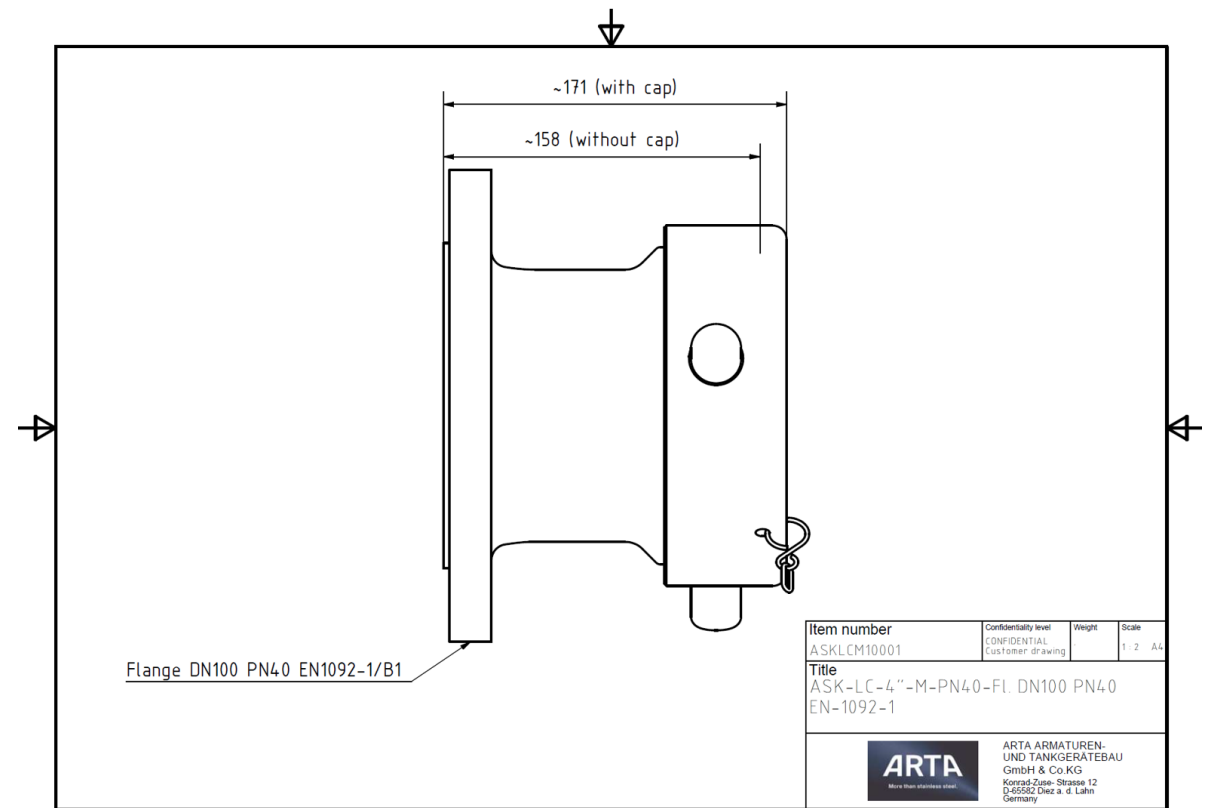
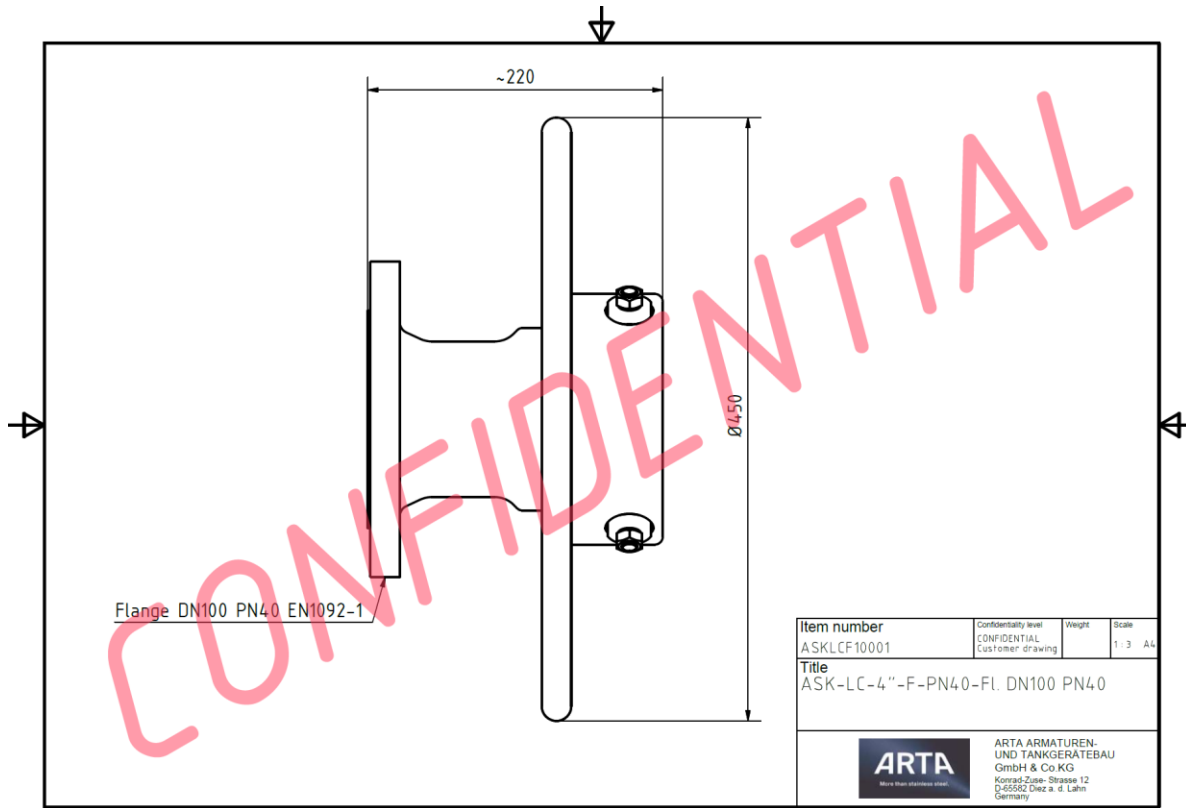


ASK-LC 2" technical drawings



Item number	Confidentiality level	Weight	Scale
ASKLCM05002	CONFIDENTIAL	-	1:1,5 A4
Customer drawing			
Title			
ASK-LC-2"-M-PN40-Fl. DN50 PN40			
EN1092-1			
		ARTA ARMATUREN- UND TANKGERÄTEBAU GmbH & Co.KG Korrad-Zuse-Strasse 12 D-65562 Diez a. d. Lahn Germany	

ASK-LC 4" technical drawings



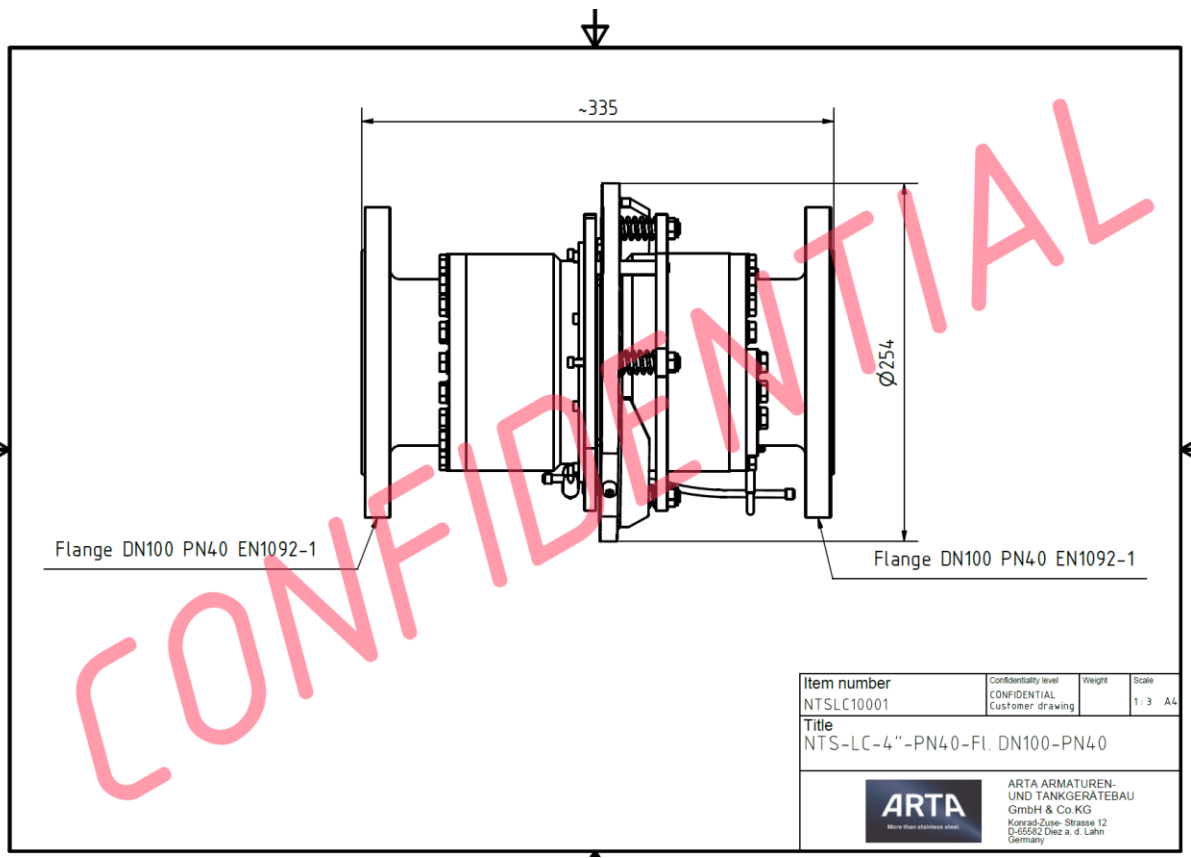
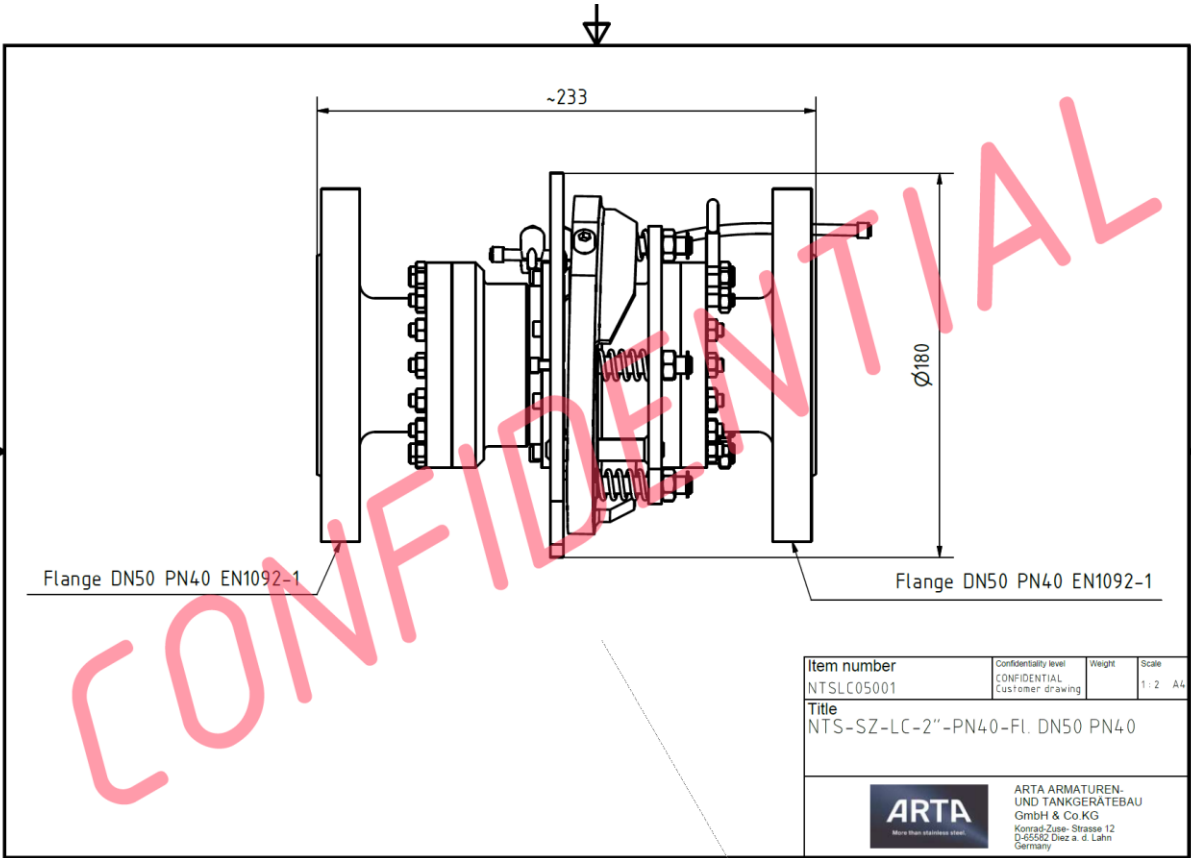
NTS-LC LCO2 breakaway couplings

Technical Datasheet

Operating temperature	-100°C to +40°C
Pressure rating	PN40
Sizes	DN50 to DN200
Body material	316L // 1.4404
Sealing	PTFE Cryo Seal
Activation	Direct pull or cable pull Non-destructive



NTS-LC 2" and 4" technical drawings



Land based operations – Truck, rail, container



Marine Transfer – Shore to Ship and Ship to Rig



Marine Transfer – Shore to Ship and Ship to Rig



ARTA LCO2 couplings
